

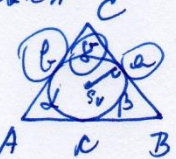
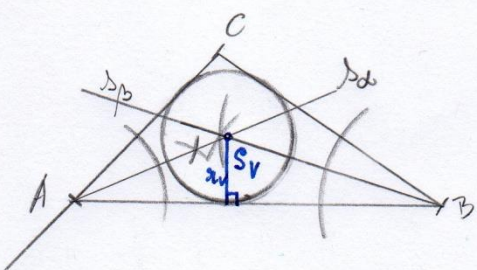
Rešitve delovnega lista 8

Opomba: Upoštevajte, da narisane dolžine niso natančne zaradi skeniranja slik.

št. 133/

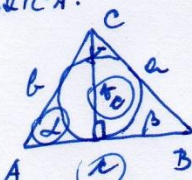
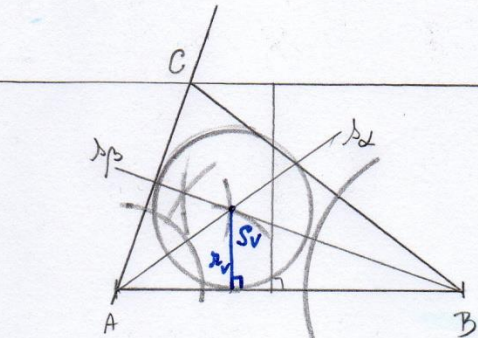
(4c)  $a = 4 \text{ cm}$   
 $b = 3 \text{ cm}$   
 $\gamma = 100^\circ$

SKICA: C

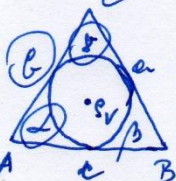
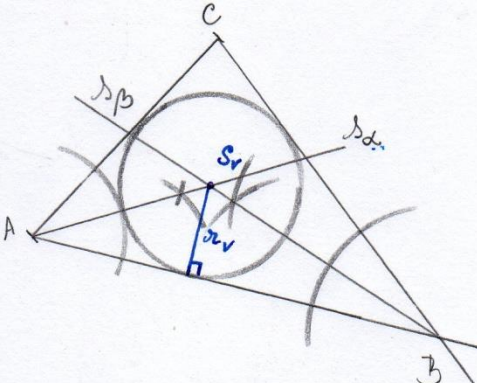
(4c)  $c = 5 \text{ cm}$   
 $r_c = 3 \text{ cm}$   
 $\alpha = 70^\circ$

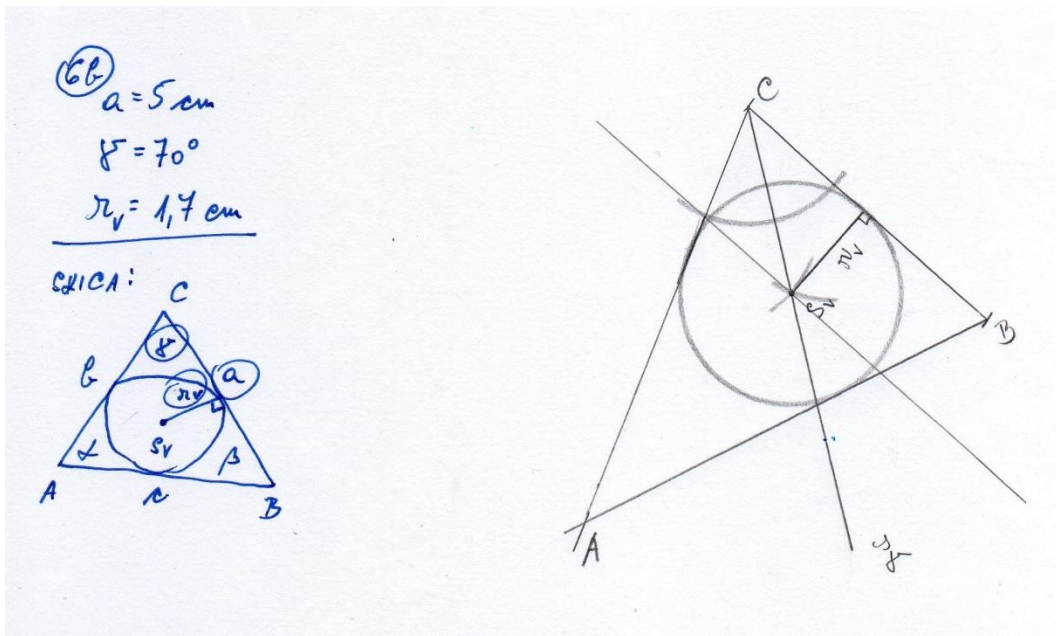
SKICA: C

(4c)  $b = 4 \text{ cm}$   
 $\alpha = 60^\circ$   
 $\gamma = 80^\circ$

SKICA: C



Navodilo:

Prepiši naslov, preberi dano besedilo, v zvezek izpiši nove pojme in v zvezek reši naloge.

## TEŽIŠČNICE IN TEŽIŠČE TRIKOTNIKA

Odpri spletno povezavo: <https://eucbeniki.sio.si/matematika7/769/index1.html> , izberi strani 364, 365, 366 in 367.