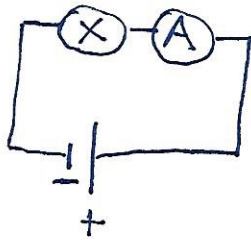
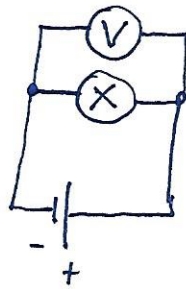


# ZAPOREDNA VEZAVA - REŠITVE

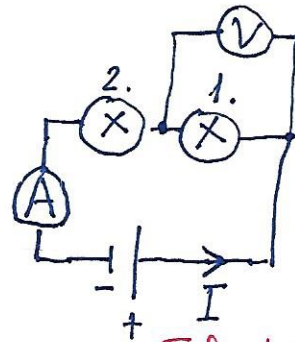
1. a)



b)



c)



Tok teče od + proti -.

2.  $t = 30\text{s}$

$$e = I \cdot t = 0,15\text{A} \cdot 30\text{s} = \underline{\underline{4,5\text{As}}}$$

$$\underline{I = 0,15\text{A}}$$

$e =$

3.  $e = 150\text{Ah}$

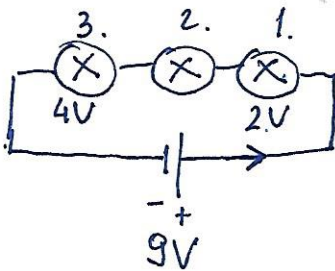
$$\underline{I = 0,2\text{A}}$$

$$t = \frac{e}{I} = \frac{150\text{Ah}}{0,2\text{A}} = \underline{\underline{750\text{h}}}$$

$t =$

4.

a)



b)  $I_3 = 0,12\text{A}$  Tok skozi vse tri je enak.

c)  $U = U_1 + U_2 + U_3$   
 $9\text{V} = 2\text{V} + U_2 + 4\text{V}$

$$\underline{\underline{U_2 = 3\text{V}}}$$

č) Manjši tok bo.

5. (G.)

$$20\text{V} : 5 = \underline{\underline{4\text{V}}}$$

Če so žarnice enake, so na njih tudi enake napetosti.